

C043

Continuous Dispensing Custard Dispenser



Requires three remote condensing systems
(Three Taylor Model RC35 Remote Condensing Systems required for warranty coverage)

Features

Offer premium frozen custard, low overrun ice cream, or sorbet in three separate flavors.

Mix Hopper

Three, 30 quart (28.4 liter). Separate hopper refrigeration (SHR) maintains mix below 41°F (5°C).

Indicator Lights

Lights indicate when mix is low in the hopper.

Product Chute

Ribbon of frozen product flows down chute to separate dipping cabinet. Easily removable for cleaning or moving dipping cabinet.

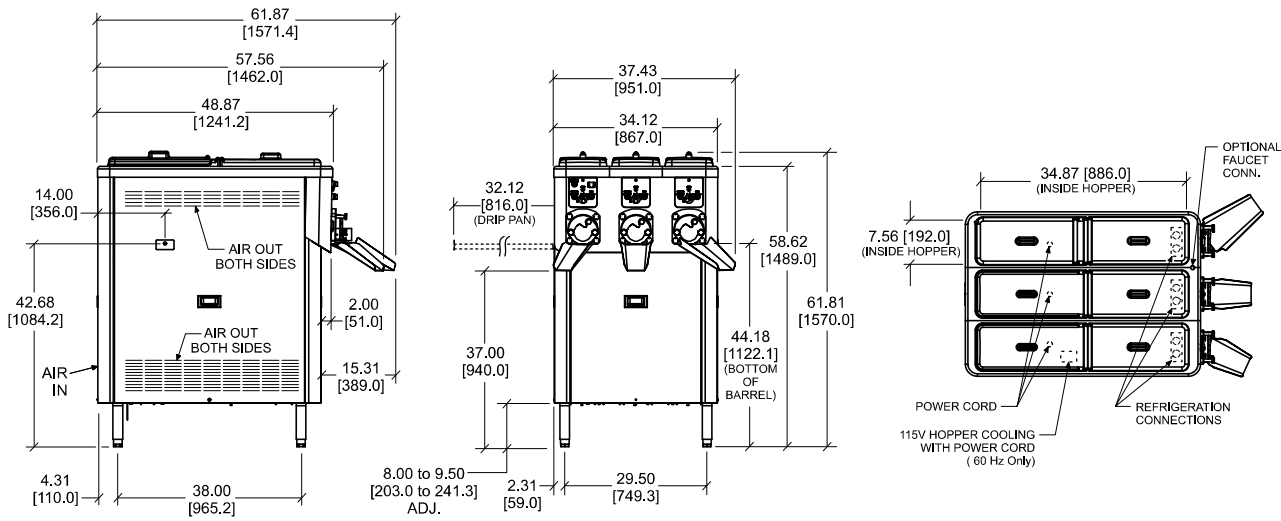
Mix Flow Regulator

Convenient dials with easy to read markings allow operator to adjust the correct amount of mix flowing into freezing cylinder for proper consistency.

Safety Features

To protect users from accidental injury:

- Beater motor will not rotate unless door is in place.
- Finger guards installed in opening of dispensing door.



TOP VIEW - OPERATOR END
ALL CONNECTIONS LOCATED UNDERSIDE OF BASE

FIGURES IN BRACKETS INDICATE MILLIMETERS / DECIMAL AND FRACTIONAL DIMENSIONS EQUAL TO (PLUS OR MINUS 1/16 INCH [1.5mm]).

| Weights | lbs. | kgs. |
|------------|-----------------|-----------------|
| Net | 943 | 427.7 |
| Crated | 1091 | 494.9 |
| | cu. ft. | cu. m. |
| Volume | 84.8 | 2.40 |
| Dimensions | in. | mm. |
| Width | 34-1/8 | 867 |
| Depth | 48-7/8 | 1242 |
| Height | 61-13/16 | 1570 |
| Clearance | 8 to 9-1/2 Adj. | 203 to 241 Adj. |

Mounted on standard legs

| Electrical | Maximum Fuse Size | Minimum Circuit Ampacity | Poles (P) Wires (W) | Dedicated Connections |
|-----------------------------|-------------------|--------------------------|---------------------|-----------------------|
| Four Dedicated Connections | | | | |
| 208-230/60/3 | 20 | 8 | 3P 4W | 3 |
| 115/60/1 | 15 | 6 | 2P 3W | 1 |
| 200/50/60/3 | 20 | 7 | 3P 4W | 3 |
| 100/50/60/1 | 15 | 6 | 2P 3W | 1 |
| Electrical | Maximum Fuse Size | Minimum Circuit Ampacity | Poles (P) Wires (W) | Dedicated Connections |
| Three Dedicated Connections | | | | |
| 380-415/50/3N~ | 12 | 11 | 4P 5W | 3 |

Specifications

Electrical

Four dedicated electrical connections are required for 60 Hz & 50/60 Hz. Three dedicated electrical connections are required for 50 Hz. See the Electrical chart for the proper electrical requirements. Dispensing electrical connections may be permanently connected. Hopper cooling is cord connected. Consult your local Taylor distributor for cord & receptacle specifications as local codes allow.

Beater Motor

Three, 2.0 HP.

Refrigeration System

Requires three remote condensing systems. (Taylor Model RC35 required for warranty coverage)
Refrigerant lines from C043 to RC35:
Suction Line - 7/8" O.D. (Copper)
Discharge Line - 3/8" O.D. (Copper)

Separate Hopper Air Cooled Refrigeration

One, 1,000 BTU/hr. R134A
(BTUs may vary depending on compressor used.)
Requires separate 115 volt power supply, cord connected.

Clearance

Minimum Clearance of 3" (76 mm) on left side and rear, 0" (0mm) on right side. Drip pan can be installed on either side. Allow 36" (914 mm) on the side drip pan is installed. Allow 36" (914 mm) in the rear for service access.

Options

- Dipping Cabinet (Consult your local Taylor distributor)
- Dipping Well (Consult your local Taylor distributor)
- Faucet

This unit may be manufactured in other electrical characteristics and may have additional regulatory agency approvals. Consult the local Taylor Distributor for other electrical characteristics and agency approvals based on specific electrical and country requirements.

(For exact electrical information and approval marks, always refer to the data label of the unit.)

Continuing research results in steady improvements; therefore, these specifications are subject to change without notice.

Bidding Specs

Electrical: Volt _____ Hz _____ ph _____
Neutral: Yes No Cooling: Air Water NA

Options: _____

Authorized Taylor Distributor



750 N. Blackhawk Blvd.
Rockton, Illinois 61072
www.taylor-company.com